

Modern Life, Smart Choice

Electronic Bidet Toilet Seat

User Manual

CLEAN COMFORT HYGIENE

Table of Contents

Safety Precautions.....	2
Description of Parts.....	6
Operation.....	8
Other function.....	10
Accessories.....	10
Installation.....	11
Trial Operation.....	14
Maintenance.....	15
Trouble Shooting.....	16
Technical Specification.....	18
Warranty.....	19
Important User Manual Information	20

Safety precautions

Read all instructions before use.

Save these instructions for future reference.



Warning

May result in death or serious injury.



Caution

May result in injury or property damage.



Warning

1. Do not use a damaged power plug or loose electric outlet.
2. Make sure to use a dedicated electrical outlet. Failing to do so may result in electric shock or fire.
3. Do not move the product by pulling the power plug.
4. Do not handle the power plug with wet hands.
5. Do not forcefully bend the power cord or place heavy objects on it to prevent it from being damaged or deformed.
6. Do not connect and pull out the power plug repeatedly.
7. Unplug the product before cleaning, repairing, inspecting, or replacing parts.
8. Remove any dust or water from the power plug.
9. Do not plug the appliance into an electrical outlet or power strip that is being used by too many appliances. Use an electrical outlet adequate for the wattage of the product.
10. If the power cord is damaged, do not attempt to repair, modify or replace the cord yourself, contact our service center.
11. If the product produces a strange noise, a burnt smell or emits smoke, unplug it immediately from the electrical outlet and then contact us. Failing to do so may result in electric shock or fire.
12. Do not insert a wire or sharp object in any product gaps or the warm air outlet.
This may result in electric shock or product damage.

Safety precautions

13. Do not place an electric heater near the product or dispose any of burning materials such as a lit cigarette in the toilet. This may result in fire or product deformation.
14. Do not place any containers filled with water, medicine, food, any metallic objects, or any flammable material on top of the products. If foreign material enters the product, this may result in electric shock or fire.
15. Do not use the product in locations exposed to excessive moisture and do not splash water onto the product.
16. Do not use the product if it is not working properly.
-Please unplug the product immediately and call our service center after closing the main water supply valve. Failing to do so may result in electric shock or fire.
17. While taking a shower or cleaning the bathroom, pull the power plug out of the electrical outlet and exercise caution that water or detergent does not splash onto the bidet. Failing to do so may result in electric shock or fire.
18. Do not disassemble, repair, or modify the product yourself.
19. Do not use the product while bathing.
20. Do not place or store the product where it can fall or be pulled into a tub or sink.
21. Do not place in or drop the product into water or any other liquid.
22. Do not reach for the product if it has fallen into water. Unplug the product immediately.
23. Do not operate or store the unit in locations where flammable or combustible materials are used.
24. Do not use industrial water or gray water for the supply as this may cause skin damage or disease.
25. Do not block the warm air outlet with your hand.
26. Turn off the main water supply valve when cleaning the filter.

Safety Precautions

27. For Children and senior who may have difficulties with adjusting temperature or those with sensitive skin or impaired heat sensitivity, set the temperature of wash spray, warm air dryer, and seat to “low” or “off” to prevent burning.
28. Close supervision is necessary when this product is used by children or persons requiring general assistance.
29. Do not press the buttons using excessive force.
30. Do not stand or place a heavy object on the seat cover.
31. Use this product for its intended use only, as described in this manual.
Do not use any attachments that are not recommended by us.
32. Never operate this product if it has a damaged cord or plug, if it is not working properly, if it has been dropped or damaged, or dropped into water.
Return the product to our service center for examination and repair.
33. Keep the cord away from heated surface.
34. Never block the air openings of the product or place it on a soft surface such as a bed or couch, where the air openings maybe blocked. Keep the air openings free of lint, hair, etc.
35. Never use the product while sleeping or when drowsy.
26. Never drop or insert any object into any opening or hose.
27. Do not use the product outdoors or operate where aerosol(spray) products are being used or where it could be exposed to oxygen.
28. This product should be grounded. In the event of an electrical short circuit, grounding reduces the risk of electric shock by providing an escape route (wire) for the electric current. This product is equipped with a cord consisting of a grounding wire with a grounding plug. The plug must be plugged into an outlet that is properly installed and grounded.
29. Unplug this product before filling. Fill(reservoir)with water only unless otherwise specified by the manufacturer. Do not over fill(or specify filling instructions.)

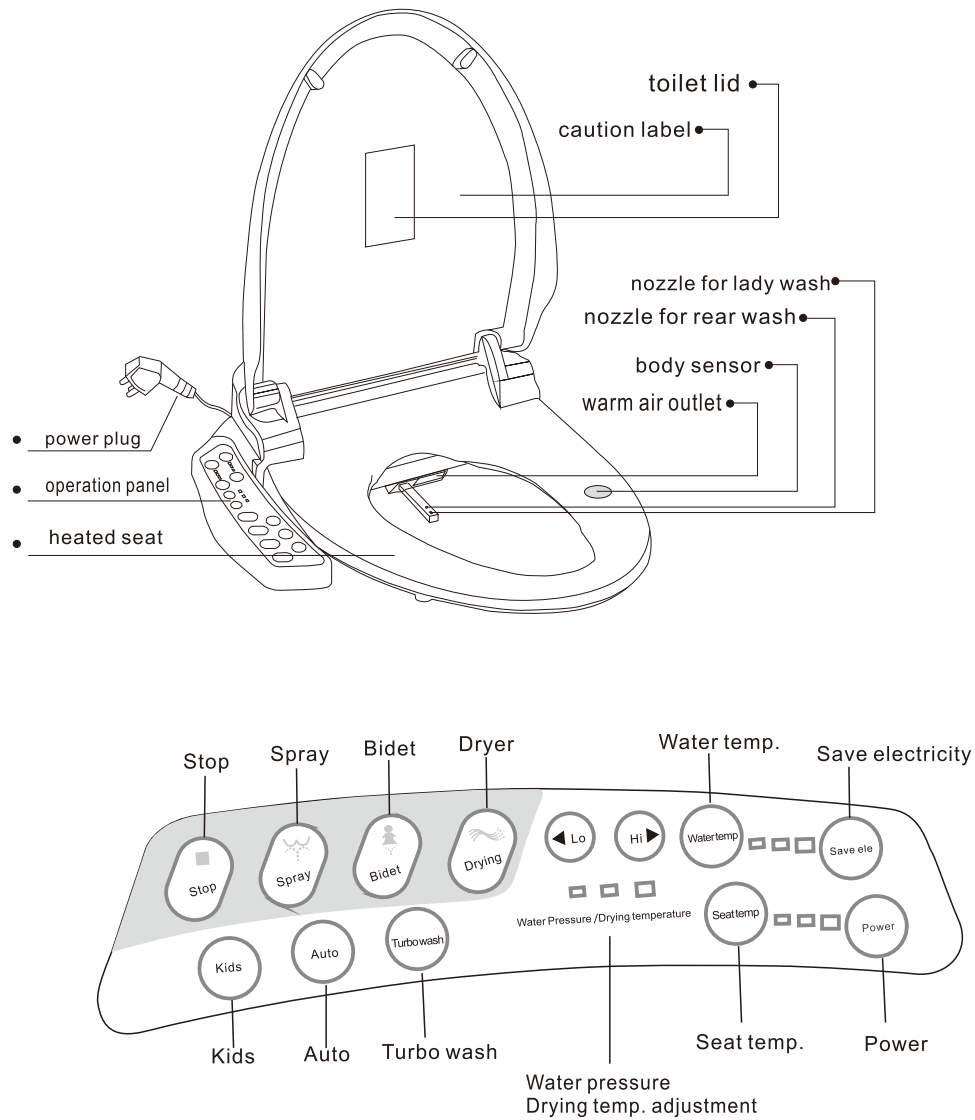
Safety Precautions

Caution

1. Do not connect the main water to the hot water pipe(only connect to cold water supply).
2. After the installation ,make sure to check all water supply connections for leaks. Rubber washers should be in place for the water connection hoses & T valve.
3. Do not open/close the seat cover using excessive force.
4. Exercise caution that urine does not come into contact with the nozzles or warm air dryer outlet-failure to do so may result in bad odors or malfunction.
5. If the product will not be used for a long period of time ,unplug the power cord, close the main water supply valve, and drain any water in the water tank.
6. Do not pull out the bidet hose or connection hose using excessive force.
7. Do not use thinner, benzene, acidic chemicals, chloride, or hydrochloric acid detergent. This may result in corrosion to the metal parts or discoloration or scratches to the bidet body.
8. This appliance is not intended for use by persons (including children) with reduced physical, sensory or mental capabilities, or lack of experience and knowledge, unless they have been given supervision or instruction concerning use of the appliance by a person responsible for their safety. Children should be supervised to ensure that they do not play with appliance.

Description of parts

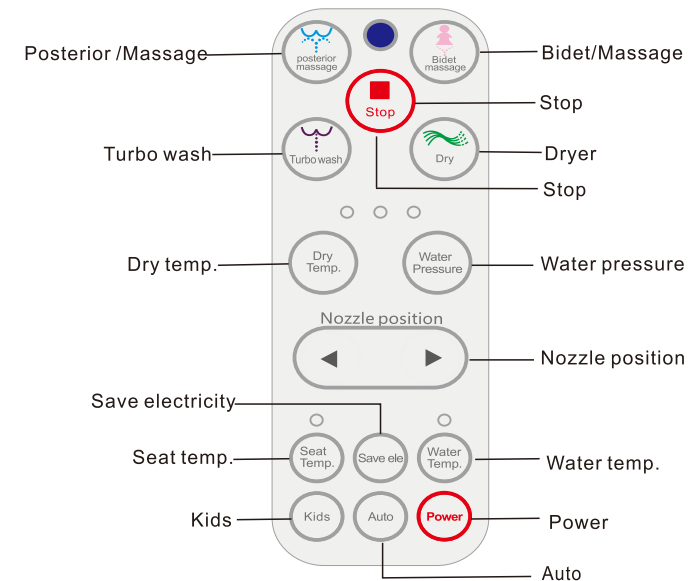
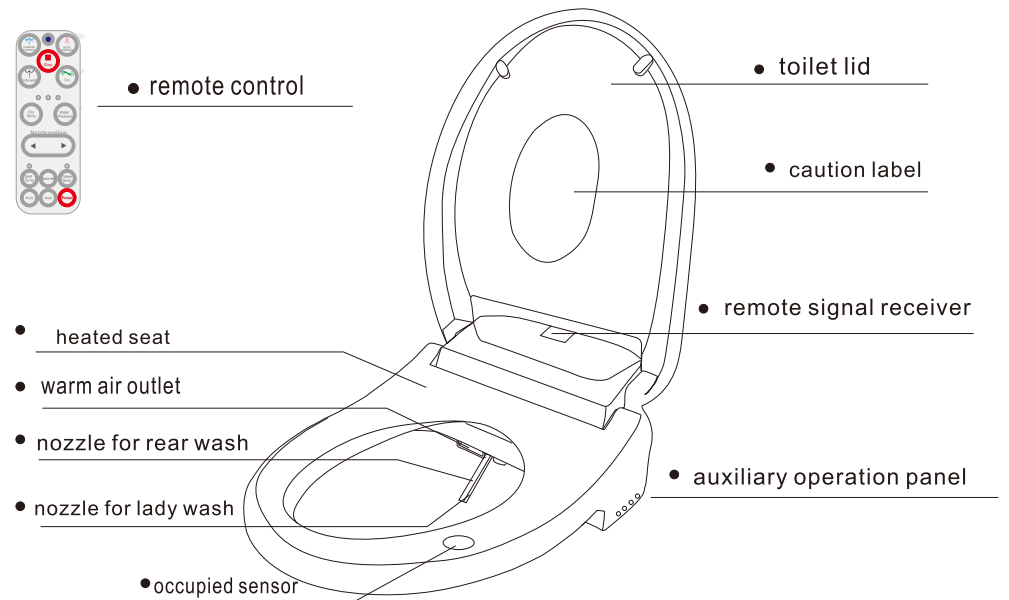
Side panel type



Note: The above drawing is only an example, your version may vary.

Description of parts

remote control type



Note: The above drawing is only an example, your version may vary.

Operation

‘Bidet / Massage’

When body seated and press this button activates the lady wash, the nozzle comes out and sprays water on the female’s front intimate zone. Press this button again ,the nozzle will move forwards and backwards like massage for a pleasant washing experience.

‘Posterior Spray / Massage’

When body seated and press this button activates the posterior wash, the nozzle comes out and sprays water on the user’s rear . Press this button again, the nozzle will move forwards and backwards like massage for a pleasant washing experience.

‘Water temp.’

Press ‘water temp’ button to adjust water temperature to desired level. There are four temperature levels indicated by lights :
Low(blue)-Med(Pink)-High(Red)-Off(No Light)

Note: Because the product utilizes a reservoir heating tank, water temperature adjustments may take a few seconds to take effect.

‘Water pressure’

While the cleansing function is operating, press the ‘water pressure’ to adjust the water pressure of spray. There are three water pressure levels: Low-Med-High

‘Dryer’

Press this button to use the warm air drying function.

‘Dryer temp.’

While the dryer function is operating, press ‘dryer temp’ to adjust the drying air temperature . There are four temperature levels indicated by light: Low(blue)-Med(pink)-High(Red)-Off(No light)

Operation

‘Seat temp.’

Use this button to control the seat temperature. Whenever the ‘seat temp.’ button is pressed, you can control the seat temperature in 4 levels (L-M-H-OFF).

‘Kids’

This function is designed for kids. Press this button activates the below process: Posterior wash (15 seconds)---Moving wash (15 seconds)---Warm air drying (2 minutes). Press ‘bidet ‘ button before ‘kids’ ,the spray will be suitable for girls. The water spray is gentle for Kids. Even kids hip doesn’t touch the sensor area, this function is still workable.

‘Auto’

When body seated and press this button activates the below process : Posterior wash(30 seconds)--- Moving wash (30 seconds)--- Warm air drying (5 minutes). Press ‘bidet’ button before ‘Auto’,the whole process will be suitable for female users.

‘Turbo wash/ Enema’

When body seated and press this button activates the turbo wash with intensive water pulsation to help defecation.

‘Nozzle position’

Adjust nozzle position by forward or backward button according to your preference and convenience during washing.

‘Stop’

All currently operating functions will stop by press this button..

‘Power’

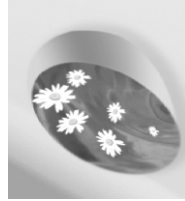
When press the power button, the product will shut itself down and all its functions will be unavailable to the user until the power button is pressed again.

Other function

1. When no body seated, press 'save electricity' button will keep lower seat temperature to save power consumption for 8 hours.



2. Built in deodorizer which is made of bamboo charcoal



3. Both toilet lid and seat have damping buffer so they can close softly and silently.



4. The nozzle washes itself before and after wash function has been performed.



Accessories



fixing plate
{installed at the bottom
of production already}



rubber expansion
screw set



adjustment
sheetmetal



quick connect
DMT hose



T joint+ water filter mesh
(installed inside already)



sealing wash
*2 pcs



fastener*2pcs

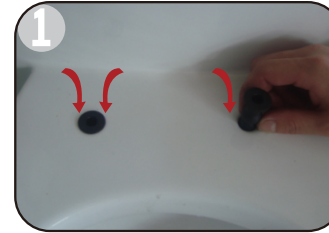
Installation

Tools needed

Wrench

Philips screwdriver

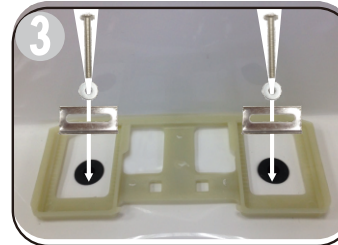
Installation step 1.



Remove the existing toilet seat / lid.
put the expansion screw rubber into
the toilet mounting hole.



Remove the fixing plate from
the product.



Put the fixing plate, adjustment
pad and adjustment sheet metal
orderly on the toilet



Screw on loosely at the beginning,
make sure the fixing plate at the center.



Put the main body on the toilet
and push forward slowly .



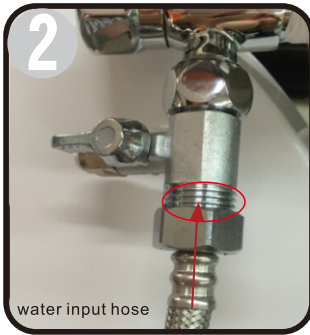
Dismount
Lift up the main body and pull it out

Installation

Installation step 2.



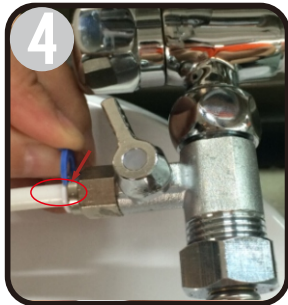
1. Close the angle valve and remove the water input hose. Connect the T joint and angle valve.



2. Connect the T joint and water water input hose



3. Connect the DMT hose to the T joint



4. Put on the blue fastener



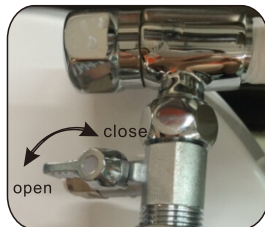
5. Connect the other side of DMT hose to the main body.



Blue fastener will prevent the DMT hose not falling off.

Note

1. After finish water supply connection, please open the angle valve.
2. Please supply water first before power on to start use the product.
3. Please stop water supply then power when dismantling.



close the water supply on T joint

Installation

Installation step 3.

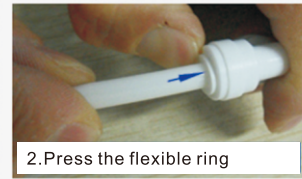
DMT hose installation and dismantling

There is an flexible ring inside the DMT hose

Please install it as photo if it is drop out



1. Remove the blue fastener

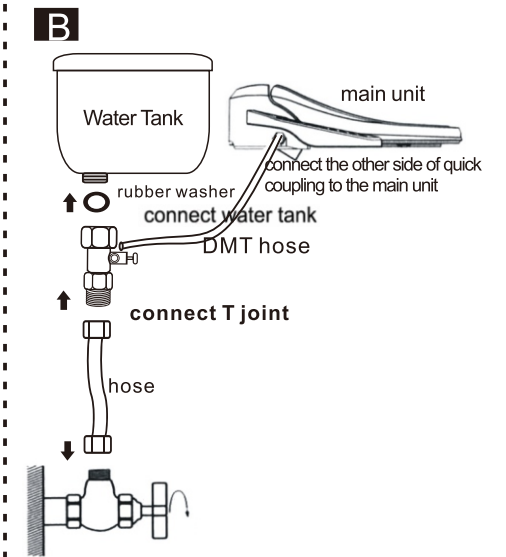
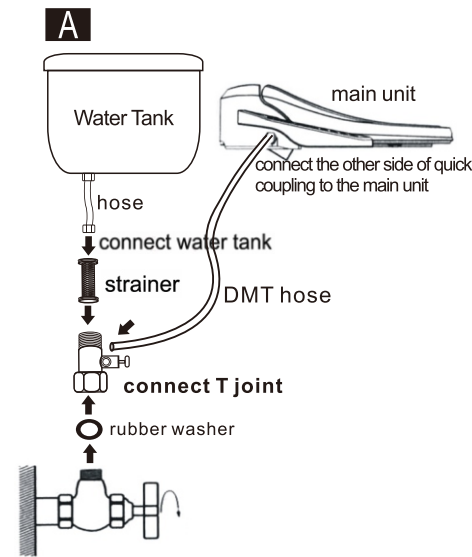


2. Press the flexible ring



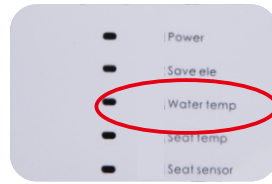
3. Pull out the DMT hose

Two connection way of water supply



Trial operation

1. After finished connection of water supply, open the angle valve and switch on the power. The nozzle will come out which is the self inspection process. The water temperature indicator flashes which means the water tank is getting water and the indicator flashes which means finish water input. (It is normal for the nozzle delay the spray for 10-15 seconds for the first time use.)



water temp.indicator

Note: It is normal phenomenon for the nozzle comes out and flows when open the angle valve and get the water supply. After power is on, the nozzle will go back and stop flowing.



normal phenomenon

Function confirmation

1. Please check each function according to the manual
2. Switch on the power and put a wet towel or clot on sensor area. After one minutes, the water will be heated as set temperature and the warm air will work when you press the drying key.
3. When there is no power supply, no function can work.



put a wet towel on sensor area

Maintenance

Seat Cleaning

Important: Unplug the product from the power source before cleaning or removing the seat.

Use a soft, damp cloth and mild cleanser to wipe down the seat. DO NOT scrub or use harsh, abrasive products to clean the product. DO NOT use thinner, benzene, acidic chemicals, chloride, or hydrochloric acid detergent. This may result in corrosion to the metal parts or discoloration or scratches to the bidet body.

Nozzle Cleaning

1. Please clean the nozzle frequently.
Press "bidet or posterior wash button" when no body seated so that the nozzle will come out. Then clean it with tooth brush or soft cloth.



2. Please do not over pull the nozzle. Press the "stop" button after finished cleaning so that the nozzle will go back automatically.

Mesh Filter Cleaning

Cleaning intervals will differ depending on use and water quality

It is recommended to check the filter at least once every year.

Turn off the water supply valve and unplug the product.

Unscrew the T-joint and take out the Mesh filter then clean the filter with toothbrush while running under tap water to effectively remove any foreign substances. Replace Mesh filter and carefully check that it is installed properly. If improperly installed, it could result in the product leaking.

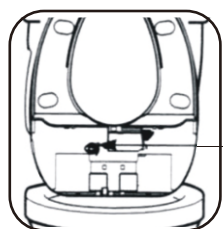
Maintenance

Short term non-use:

If the product will not be used for more than a few weeks, you can simply unplug it. You may also consider shutting the water supply off at the wall for extra precaution.

Long term non-use

If the product will not be used for an extended time (eg. few months), you should unplug the unit, shut the water supply off at the wall, and then drain the hot water heater. To drain the hot water heater, remove the drainage screw on the back of the bidet seat. Please don't forget to put the screw back on after drainage.



drainage screw

Troubleshooting

If the bidet appears to be operating abnormally, please review the troubleshooting tips before contact our service center as most issues are easily resolved with a few simple steps. If you are unable to resolve the issue after checking the following items, please contact us then.

Check before continuing:

Make sure the bidet is connected to power and the outlet is working properly
Make sure the Remote Control has fresh batteries and they are installed correctly (3xAAA)

Make sure main water supply valve is open.

Confirm there are no leaks from hoses or water supply.

Make sure Mesh Filter is clean and free of build up or debris.

After checking items above, refer to the following troubleshooting chart for additional solutions.

Troubleshooting

Problem	Possible Causes	Possible Solutions
The bidet is not working	<ol style="list-style-type: none"> 1. Bidet not plugged in 2. No power to bidet 3. There is power, but nothing happens when try to use 4. Not activating body sensor 	<ol style="list-style-type: none"> 1. Make sure the bidet is plugged in. 2. Check the power button on control panel to see if it is turned off 3. Check if the Remote control batteries are dead for the model with remote
Product shuts off during use	<ol style="list-style-type: none"> 1. Washing time exceeded setting time. 2. Power failure 	<ol style="list-style-type: none"> 1. Press the wash button to extend the time. 2. Check the power.
Lower water flow or spray pressure.	<ol style="list-style-type: none"> 1. Clogged filter 2. Water supply valve not opened fully 3. Nozzles dirty 4. Pressure settings 	<ol style="list-style-type: none"> 1. Remove, clean and reinstall mesh filter 2. Check water supply valve at wall to fully open 3. Clean nozzles 4. Adjust the water pressure setting
Bidet wash feature does not work or fails to spray	Body sensor does not detect that you are sitting on the bidet	Adjusting sitting position to fully cover the body sensor.
Seat not heated	Seat temperature set to off	Make sure that the seat temp setting is on (Low-Blue light, Med-Pink light, High-Red light, Off-No light)
Water(wash spray) not heated	Water temperature set to off	Make sure that the water temp setting is on (Low-Blue light, Med-Pin light, High-Red light, Off-No light)
Water flows before or after use	Water coming from nozzles	<ol style="list-style-type: none"> 1. The water that comes out between the nozzles before or after wash is the self-clean and is not a malfunction 2. Residual water may drip into the bowl for several seconds after a wash or self-clean and is not a malfunction
Water leaks from areas other than the nozzles.	<ol style="list-style-type: none"> 1. Water leaking from T-valve 2. Water leaking from the bidet hose connection 	<ol style="list-style-type: none"> 1. Make sure that the rubber washer is inserted correctly and firmly tighten the connector 2. Make sure the bidet hose is correctly connected and tight.

Technical Specifications

Power Voltage		220V ~ 240V 50Hz ~ 60Hz 1450W
Water supply	water input	connect to the water pipe directly
	water pressure	0.08MPa-0.75MPa (0.8kgf/cm ² -7.5kgf/cm ²)
Wash device	Posterior wash water volume	0.5L/min - 0.9L/min
	Female wash water volume	0.5L/min - 0.9L/min
	Tank volume	1L
	Temperature	Room temp./ low 33°C/medium 38°C/high 40°C
	Heating power	1350W
	Safety device	Floating switch / temperature fuse / water level sensor
Seat heating device	Temperature	Room temp./low 30°C/medium 35°C/high 40°C
	Heating power	50W
	Safety device	Temperature fuse
Dryer device	Temperature	Room temp./low 45°C/medium 50°C/high 55°C
	Heating power	200W
	Safety device	Temperature fuse
Other safety device		Earth leakage protector
Power cord length		1.5m
Net weight		4.5kg

Warranty

This electronic bidet has been designed and manufactured with great care and attention to detail. We offer 12 months warranty.

In the following cases the warranty does not apply:

- a) Damage or loss sustained in fire, earth quake, flood, thunder, or other act of providence, pollution, gas damage, salt damage and abnormal voltage.
- b) Damage or loss resulting from any installation against the installation manual, any unreasonable use, misuse, abuse, negligence against the cautionary statements of owner's manual and label on the product, or improper maintenance of the product against the user manual.
- c) Damage or loss resulting from modification, disassembly and destruction of the product.
- d) Damage or loss resulting from water stain retention, sediments or foreign matter contained in a water system.
- e) Damage or loss resulting from the quality of water in the region where the product is used.
- f) Damage or loss resulting from relocation after installment, improper installation or hazardous environment.
- g) Damage or loss resulting from detect other than product such as change in shape of building frame.
- h) Damage or loss resulting from bite by animals or insects such as mouse or residual of dead animals or insects.
- i) Damage or loss resulting from freeze of product.
- j) Damage or loss resulting from undesignated power supply (voltage, frequency) and electro magnetic wave generated in outside of product such as power lines and peripheral device.
- k) Damage or loss resulting from the use mounted on moving vehicles such as cars and ships.
- l) Damage or loss resulting from consumption of battery etc.
- m) Damage or loss resulting from abrasion of daily maintenance points (water drain valve, filter, washer, packing, etc.)

Important User Manual Information

If you want to dispose this product, do not mix it with general household waste. There is a separate collection system for used electronic product in accordance with legislation that requires proper treatment, recovery and recycling.

Only discard discharged batteries. They should not be disposed of with household waste, but rather at appropriate collection sites .

Memo